



CRAIG KIELBURGER S.S. TIJ101

PHOTOSHOP TUTORIAL;

"COWBOY EARL"

MR. K. HUME

Altering an image using the clone tool.

The clone tool allows you to "pick-up" parts of an image and paint with it. You are going to use the clone tool to radically alter this image of the cowboy.

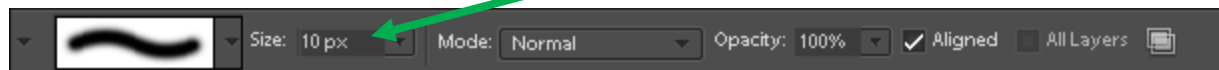
In Photoshop Elements, open the file called

Cowboy.tif. You can find this file on Mr. Hume's website. Save a copy of the picture file in your "G Drive" in your Graphics folder.

Use the **Zoom** tool, or CTRL (+) to zoom in on the cowboy's face. This is a great image but we will be removing the cigarette out of his mouth because we don't want to have him smoking.

Select the **Clone** tool. Make sure you have the "Clone Stamp Tool" option and NOT the "Pattern Stamp Tool"

Set you brush size somewhere between 5 and 10. Mode is "Normal". Opacity is 100%.



It is better to have a smaller brush size in this case. To make the cloning look most realistic you will have to use multiple small brushes and select multiple small areas for cloning.

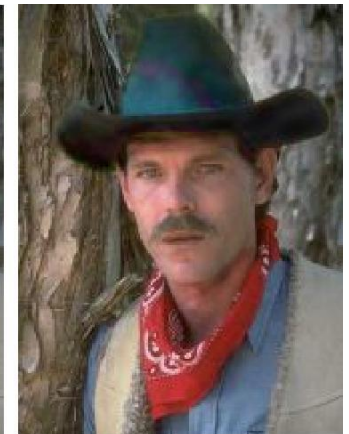
Hold down the "**Alt**" key and click down on the cowboy's chin to the left or right of the cigarette. Notice that the cursor changes. Now release the "**Alt**" key and click down over top of the cigarette.

Move the brush back and forth. The cigarette pixels are being replaced by pixels from the area you selected with the "Alt-click" procedure. Continue this process until the image has been transformed and the cigarette has been obscured by these new pixels. You will most likely need to select new cloning areas multiple times.

Before

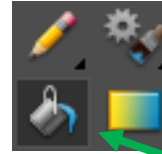


After



Remember to save your work regularly!

Possibly found in the drop-down menu under the Sharpen Tool



Use the **Blur** tool to smooth out some of the stamp edges, and some painting and drawing tools to further refine the image.

Carefully select the cowboy's hat using the **Magnetic Lasso**. Feather your selection to help with colour blend. **Select -> Feather -> Feather Radius 3 Pixels**. Then use the menu command **Enhance -> Adjust Colour -> Colour Variation** to add increments of Red, Blue, Green, and Yellow, Magenta and Cyan to alter the colour of the hat. Deselect your hat with CTRL D when finished.

When you are satisfied with the way your cowboy looks, save your work and submit via the website for marks.

SUBMIT AS A PDF

The goal with this type of photo-editing is to make the image look as realistic as possible.

Patience is the key!!!